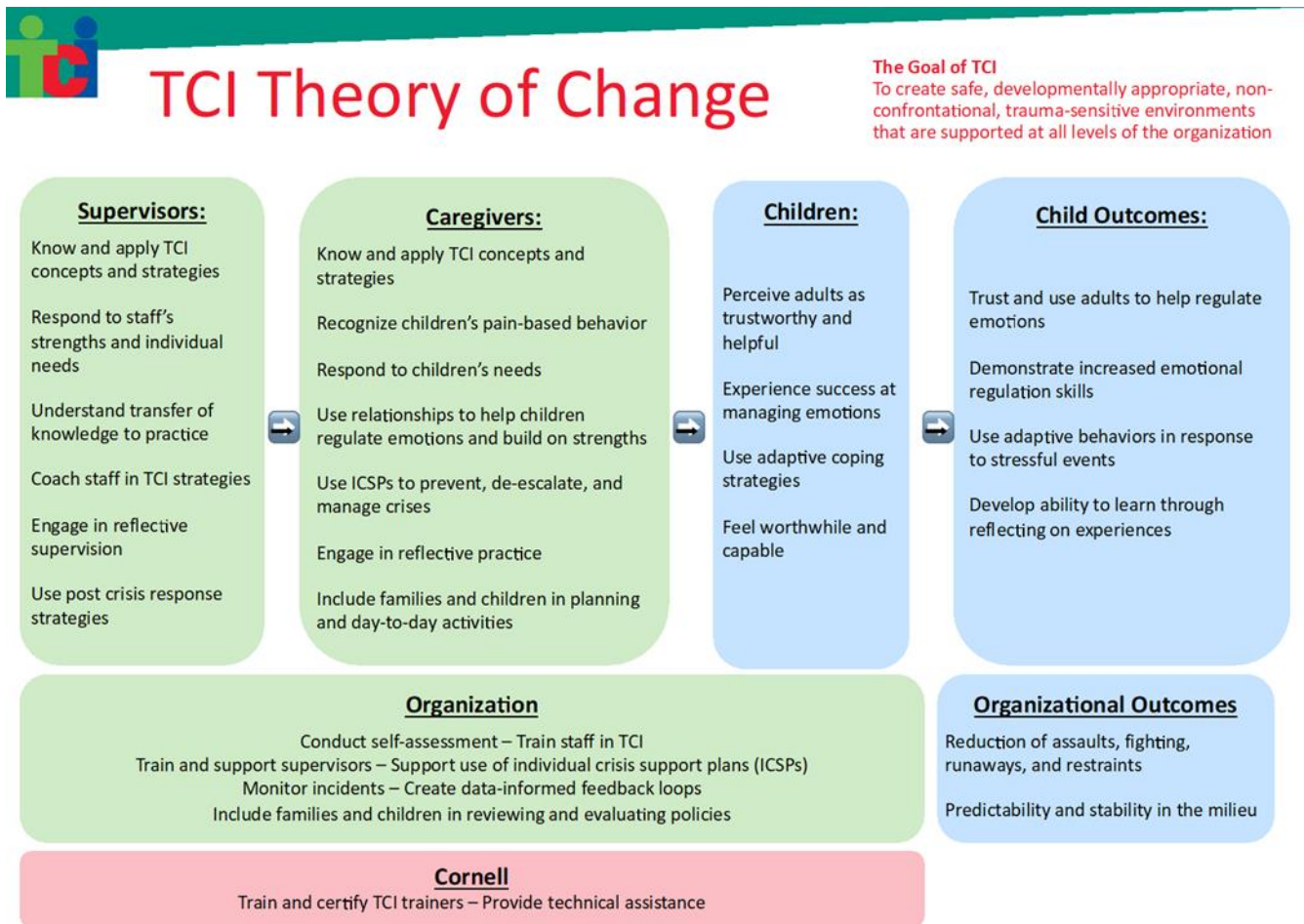


TCI – Module Two Implementation of the TCI System



TCI Theory of Change

In order to implement, embed and sustain TCI, organisation’s need to ensure that TCI concepts and strategies are within practice, as well as provide robust organisational support and accountability. The TCI system creates a consistent approach to crisis prevention and management within a nurturing, safe and predictable environment as it identifies roles and tasks as well as desired practice at all levels of the organisation.



1

TCI System Theory of Change includes the pathways that lead to improved child outcomes and is displayed above.

Reading the Theory of Change graphic we focus on the child outcomes that we hope to reach through the implementation of the TCI system within Challenge Community Services.

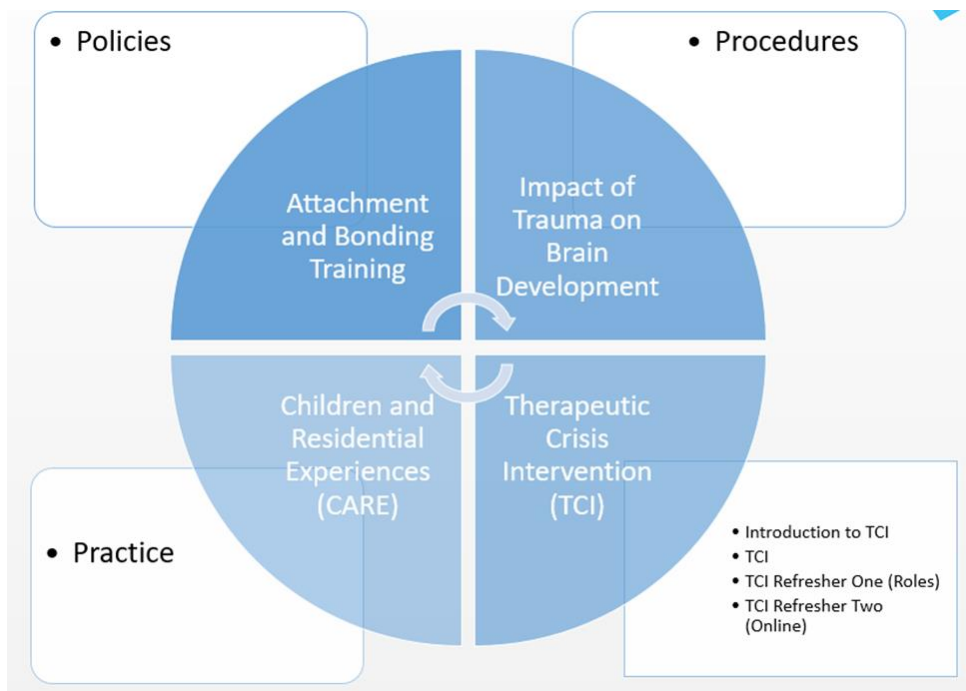
Effective TCI Implementation

For TCI to be an effective crisis management system, the following six general domains need to be addressed:

1. Leadership and program support
2. Child and Family Inclusion
3. Clinical Participation
4. Supervision and post-crisis response
5. Training and competency standards
6. Documentation, incident monitoring and feedback



Challenge Foster Care Trauma Informed training Program



Details of this topic are covered in the **Therapeutic Crisis Intervention (TCI) Student Workbook 7th Edition**. Refer to **Module Five** pages S61 – S70.